

# INSTRUCTIONS FOR #100600 PRR E-6 ATLANTIC KIT

These instructions provide photographs of completed model, exploded view drawings, diagrams, step-by-step instructions and an itemized parts list. If for reasons beyond our control, any shortage or faulty part is found, write directly to the manufacturer including name of your dealer and date of purchase. Return any defective parts for exchange. The builder should study the instructions and drawings to attain a working knowledge of proper procedure. Assembly work should be in sequence outlined in this manual to assure proper construction. We have included some extra parts in case you misplace or drop them on the floor.

DO NOT RUN THE MECHANISM OR ENGINE UPSIDE DOWN.

## TOOLS

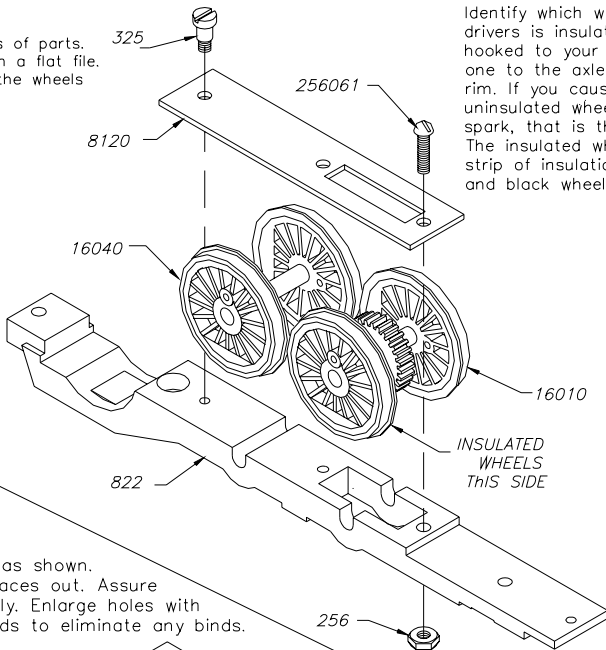
This is a builders kit, you will need a few tools. You will find use for the following: small hammer, several small pattern files, jewelers screwdriver (a set is convenient), a 6" flat file with a fairly fine cut, knife, pliers, flush cut nippers like Mascot #413 and tweezers.

BEFORE PAINTING YOUR MODEL OR DETAILING THE BOILER, WE RECOMMEND THAT YOU BUILD THE COMPLETE MECHANISM ATTACH THE UNDECORATED BODY AND THOROUGHLY TRACK TEST IT.

## STEP #1

Clean flash from edges of parts. File mating surfaces on a flat file. Assemble and assure the wheels spin freely. Oil lightly.

### SUBKIT 100603

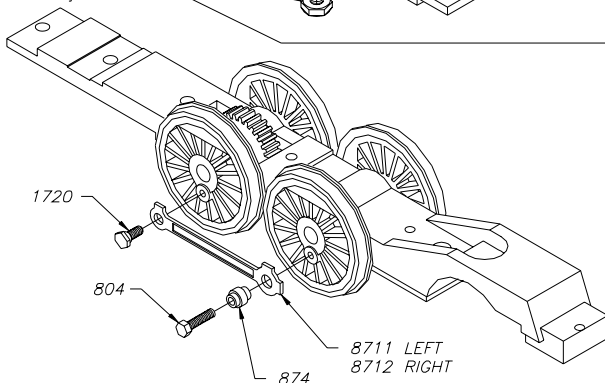
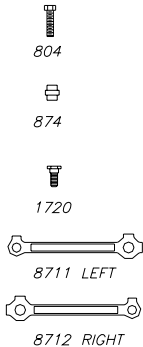


Identify which wheel of each set of drivers is insulated. With two wires hooked to your powerpack, touch one to the axle and one to a wheel rim. If you cause a spark, that is the uninsulated wheel. If there is no spark, that is the insulated wheel. The insulated wheel has a thin gray strip of insulation between the tire and black wheel center.

## STEP #2

Assemble side rods as shown. The fluted surface faces out. Assure the wheels spin freely. Enlarge holes with round file in side rods to eliminate any binds. Oil lightly.

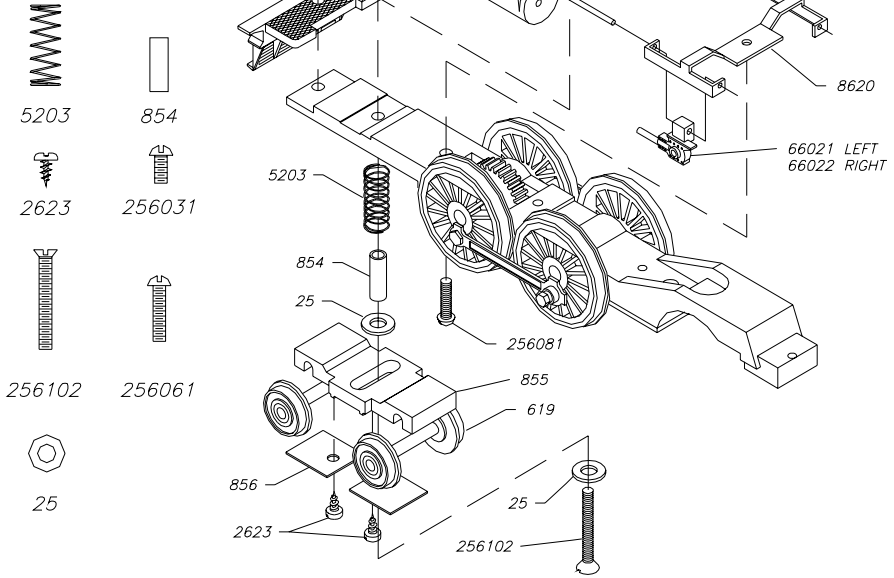
### SUBKIT #100601



### STEP #3

Assemble lead truck.  
Assemble pilot, lead truck  
cylinders and crosshead guide  
to mechanism.

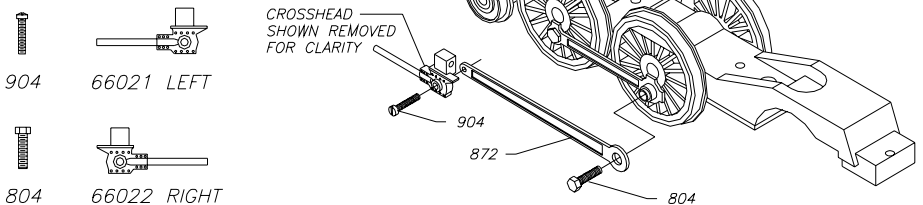
SUBKIT 100604, 100606



### STEP #4

Assemble main rods & crossheads as shown.  
The fluted surface of rods face out. Assure  
the wheels spin freely. Oil lightly.

SUBKIT #100601



# STEP #5

## PARTS IDENTIFICATION LIST SHOWN FULL SIZE



8810



8830



8850



8860



8820



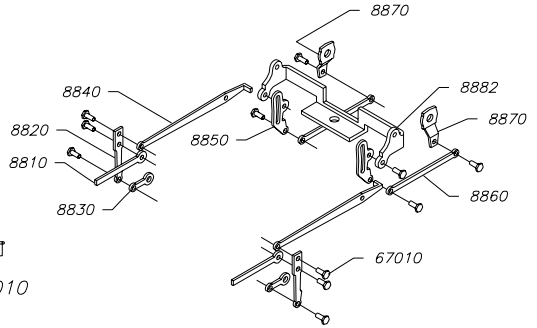
8840



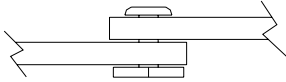
8870



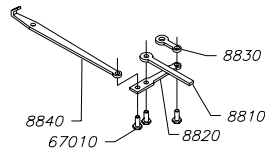
67010



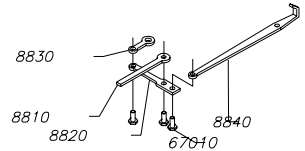
SET RIVETOOL WITH CENTER POINT  
IN HOLE IN END OF RIVET. TAP WITH  
LIGHT HAMMER UNTIL RIVET IS  
PROPERLY FLARED. BE CAREFUL  
NOT TO MAKE JOINT TOO TIGHT.



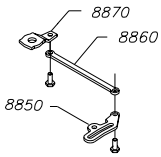
SIDE VIEW OF RIVET  
SHOWN 10X SIZE  
NOTE CLEARANCE



RIGHT SIDE  
FRONT UNIT  
STEP 5.1

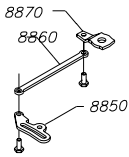


LEFT SIDE  
FRONT UNIT  
STEP 5.2



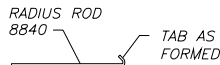
RIGHT SIDE  
REAR UNIT REAR UNIT

STEP 5.3



LEFT SIDE  
REAR UNIT

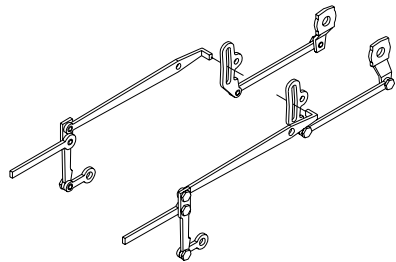
STEP 5.4



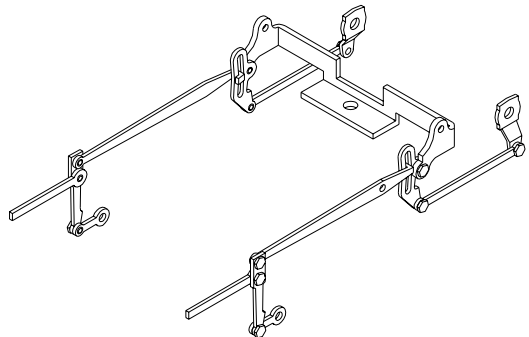
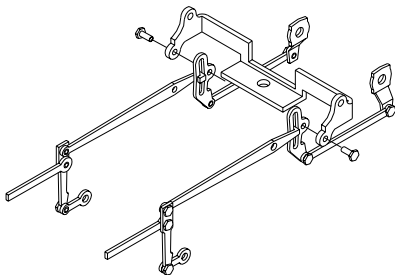
PUT TAB THRU  
SLOT IN LINK.  
BEND INNER  
END FORWARD

ROD MUST MOVE  
FREELY IN LINK

STEP 5.5



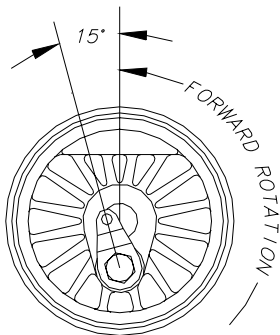
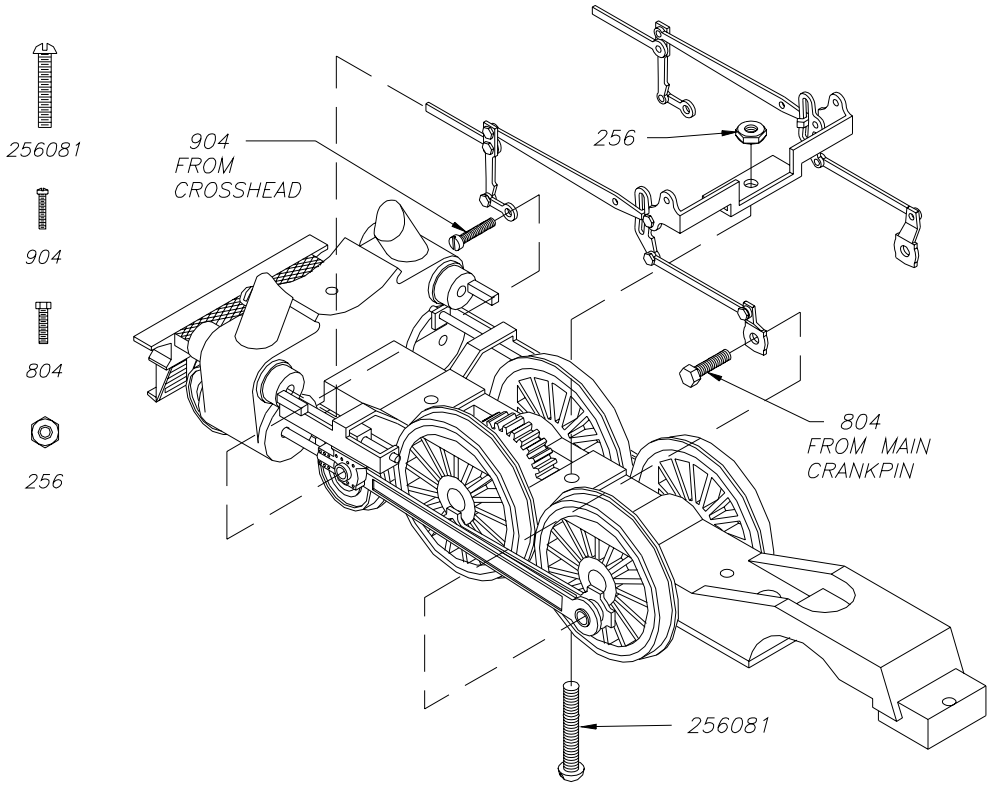
# STEP 6



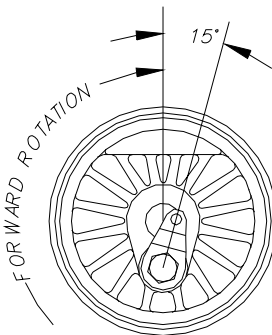
# STEP #7

Install valve gear. Main rod must pivot.  
Cut-off 804 flush with back of main rod &  
put drop of glue on threads to keep  
screw from backing out.  
Time valves as shown below.

SUBKIT 100603



LEFT SIDE

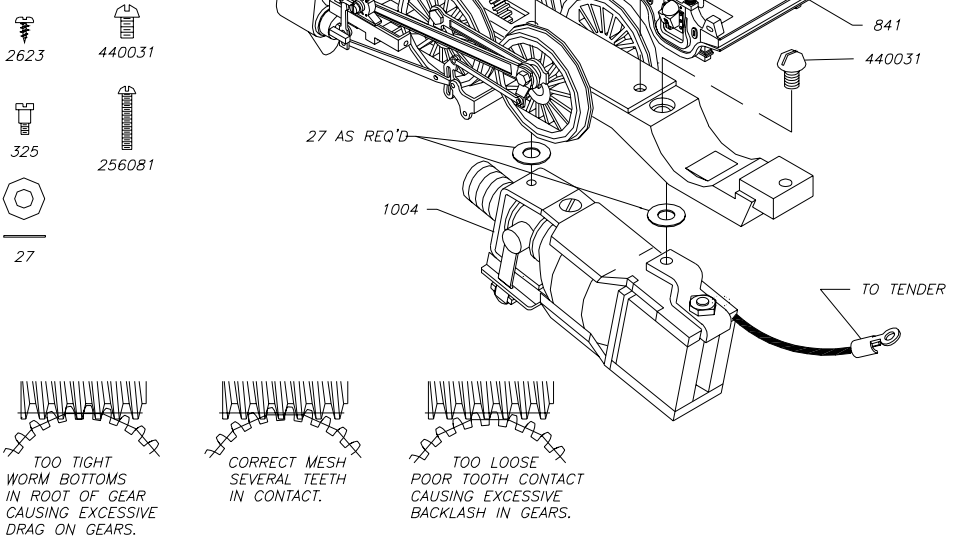


RIGHT SIDE

## STEP #8

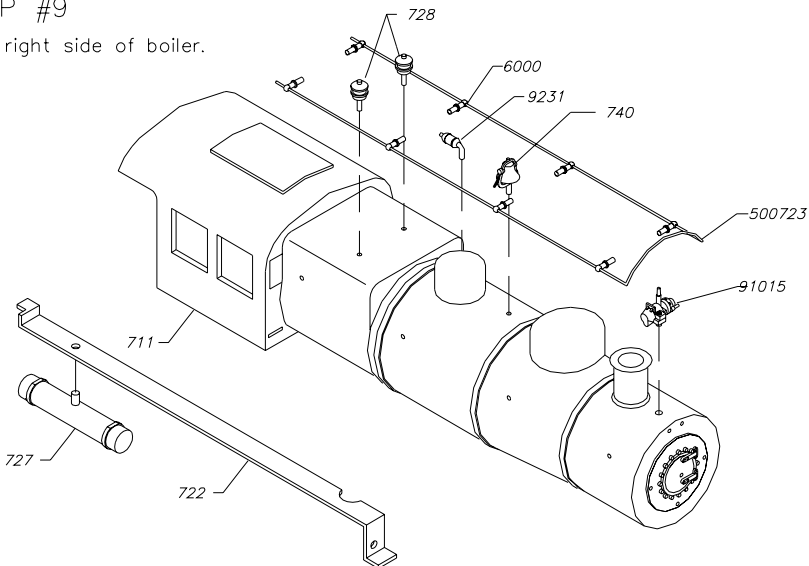
Assemble & install trail truck.  
Install motor using #27  
to adjust gear mesh.  
See page 5 for illustration.  
Lube & test run.

Subkit 100603, 100607  
FULL SIZE



## STEP #9

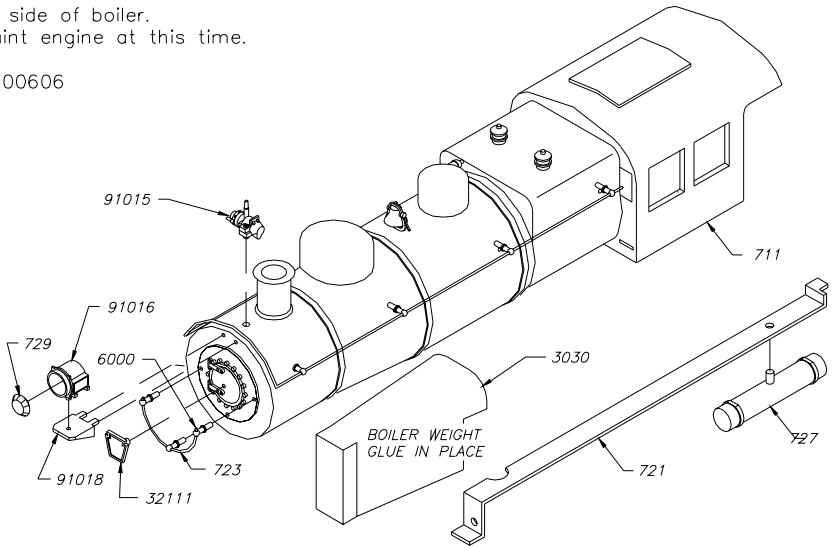
Detail right side of boiler.



## STEP #10

Detail left side of boiler.  
Do not paint engine at this time.

Subkit #100606

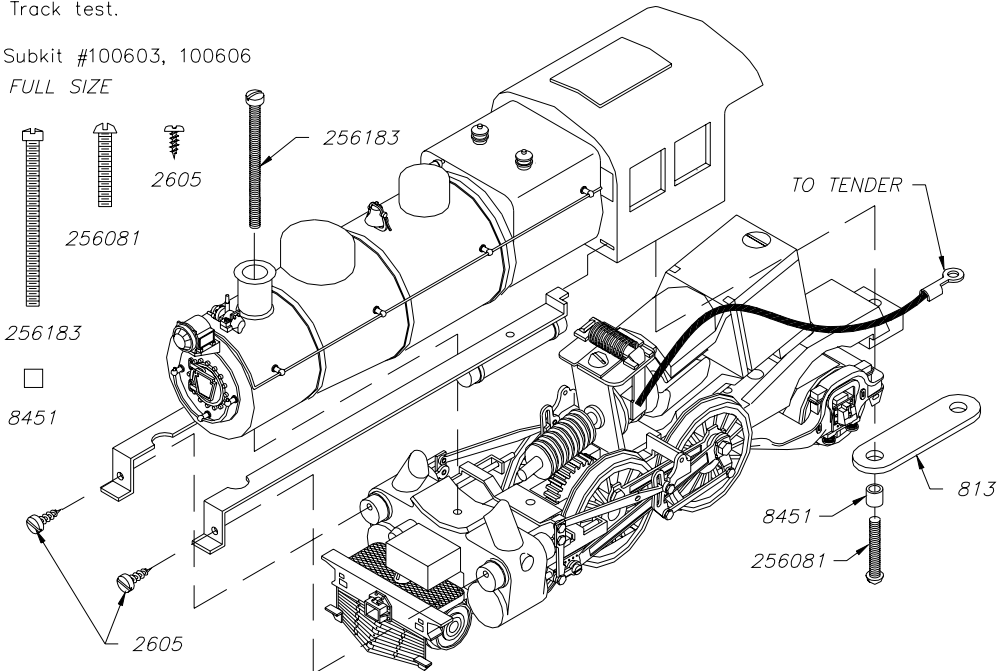


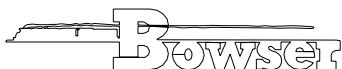
## STEP #11

Install boiler on mechanism.  
Track test.

Subkit #100603, 100606

FULL SIZE





# 13000 GAL TENDER KIT 150635

BOWSER MANUFACTURING CO.  
 1302 JORDAN AVE.  
 MONTOURSVILLE, PA 17754  
 PH (570) 368 2379  
 FAX (570) 368 5046

<http://www.bowser-trains.com>

