

INSTRUCTIONS FOR #101100 CASEY JONES TEN WHEELER KIT

These instructions provide photographs of completed model, exploded view drawings, diagrams, step-by-step instructions and an itemized parts list. If for reasons beyond our control, any shortage or faulty part is found, write directly to the factory including name of your dealer and date of purchase. Return any defective parts for exchange.

The builder should study the instructions and drawings to attain a working knowledge of proper procedure. Assembly should be in sequence outlined in this manual to assure proper construction.

We have included some extra parts in case you misplace or drop them on the floor.

DO NOT RUN THE MECHANISM OR ENGINE UPSIDE DOWN.

TOOLS

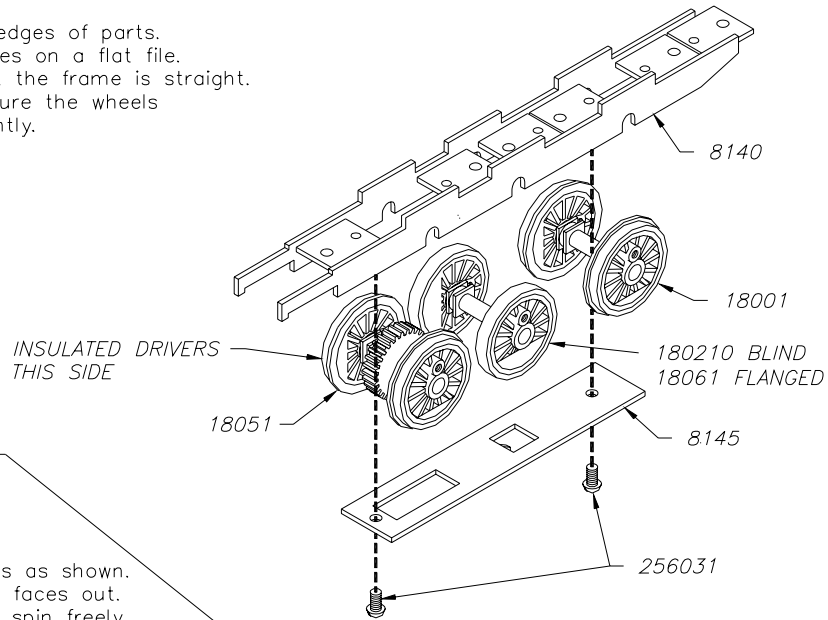
This is a builders kit, you will need a few tools. You will find use for the following: small hammer, several small files, jewelers screwdriver (a set is convenient), a 6" flat file with a fairly fine cut, knife, pliers, flush and tweezers.

BEFORE PAINTING YOUR MODEL OR DETAIL THE BOILER, WE RECOMMEND THAT YOU BUILD THE COMPLETE MECHANISM ATTACH THE UNDECORATED BODY AND THOROUGHLY TRACK TEST IT.

STEP #1

Clean flash from edges of parts.
File mating surfaces on a flat file.
Check to see that the frame is straight.
Assemble and assure the wheels spin freely. Oil lightly.

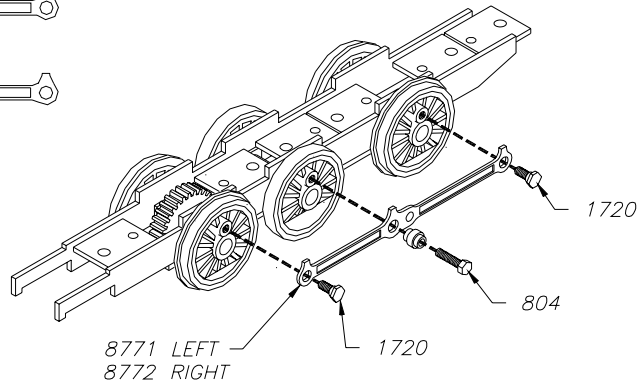
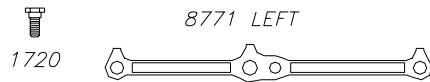
Subkit 100928



STEP #2

Assemble side rods as shown.
The fluted surface faces out.
Assure the wheels spin freely.
Oil lightly.

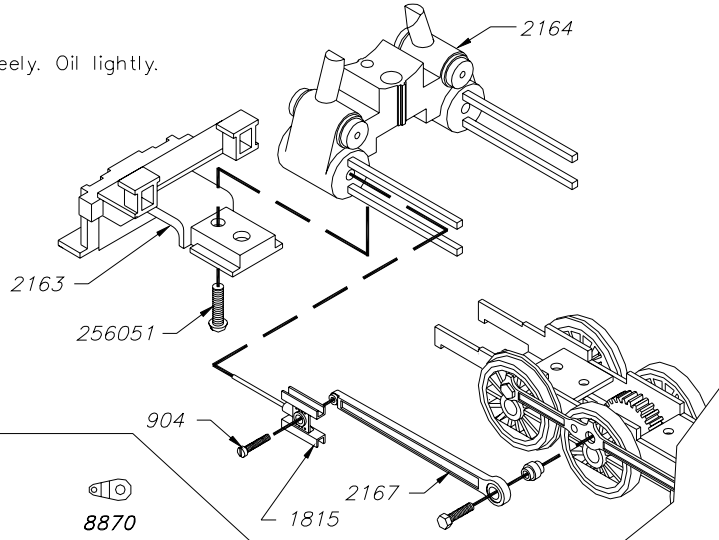
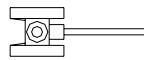
Subkit 100926



STEP #3

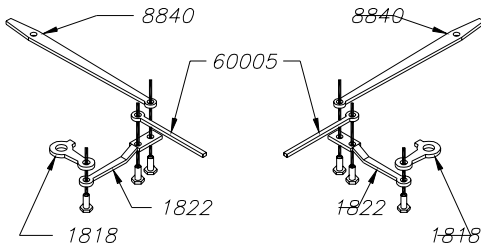
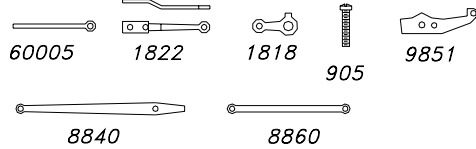
The mechanism must roll freely. Oil lightly.

Parts in subkit
100930
Parts shown full size

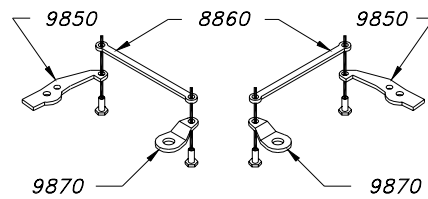


STEP #4

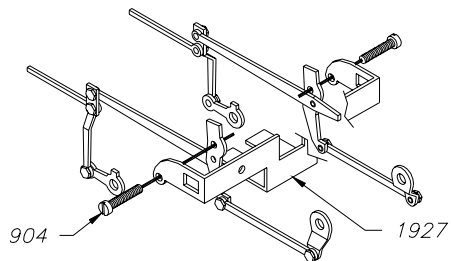
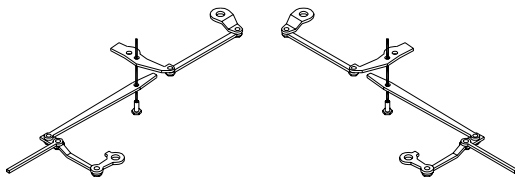
Parts in subkit #100905
Parts shown full size



Rivet valve gear together using care not to assemble too tightly. Valve gear must dangle loosely or binding will result.



ASSEMBLE FRONT & REAR UNITS.

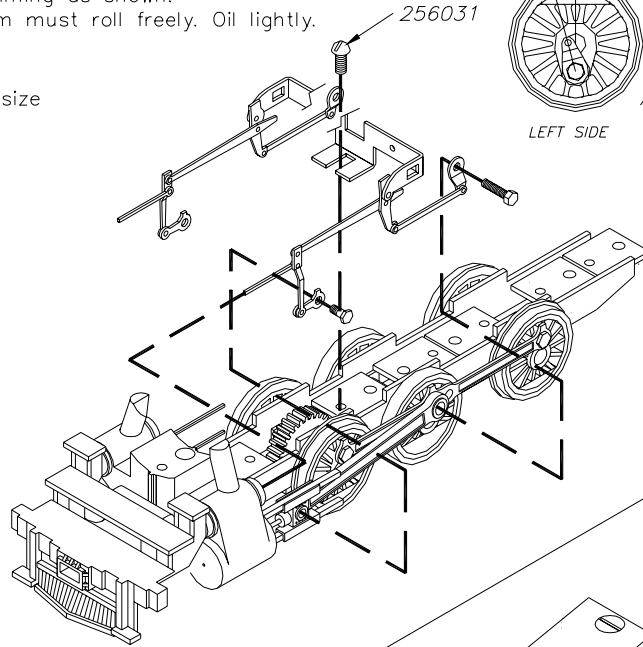
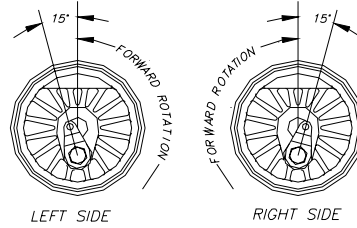


CUT OFF 904 &
PUT A DROP OF GLUE
ON THREADS TO KEEP
FROM BACKING OUT.

STEP #5

Install valve gear to mechanism,
Adjust valve timing as shown.
The mechanism must roll freely. Oil lightly.

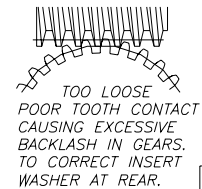
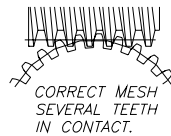
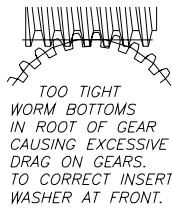
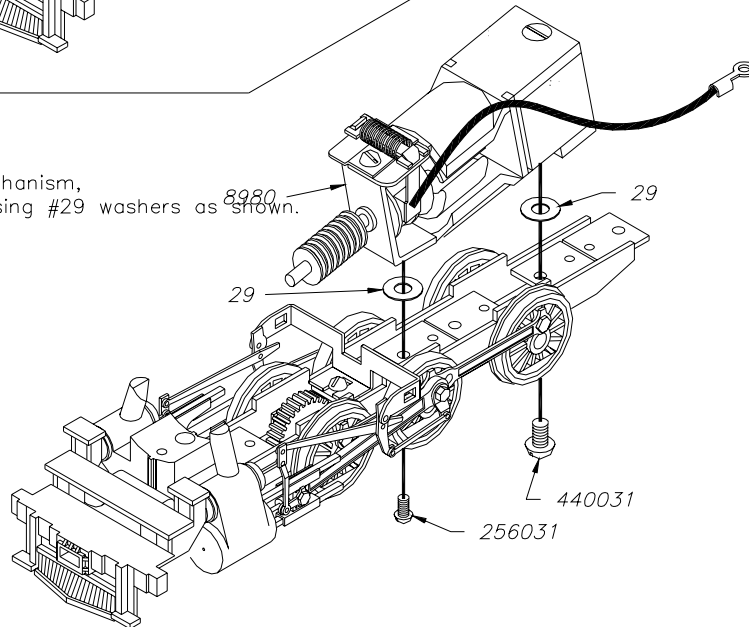
Parts in subkit
101103
Parts shown full size



STEP #6

Install motor to mechanism,
Adjust gear mesh using #29 washers as shown.

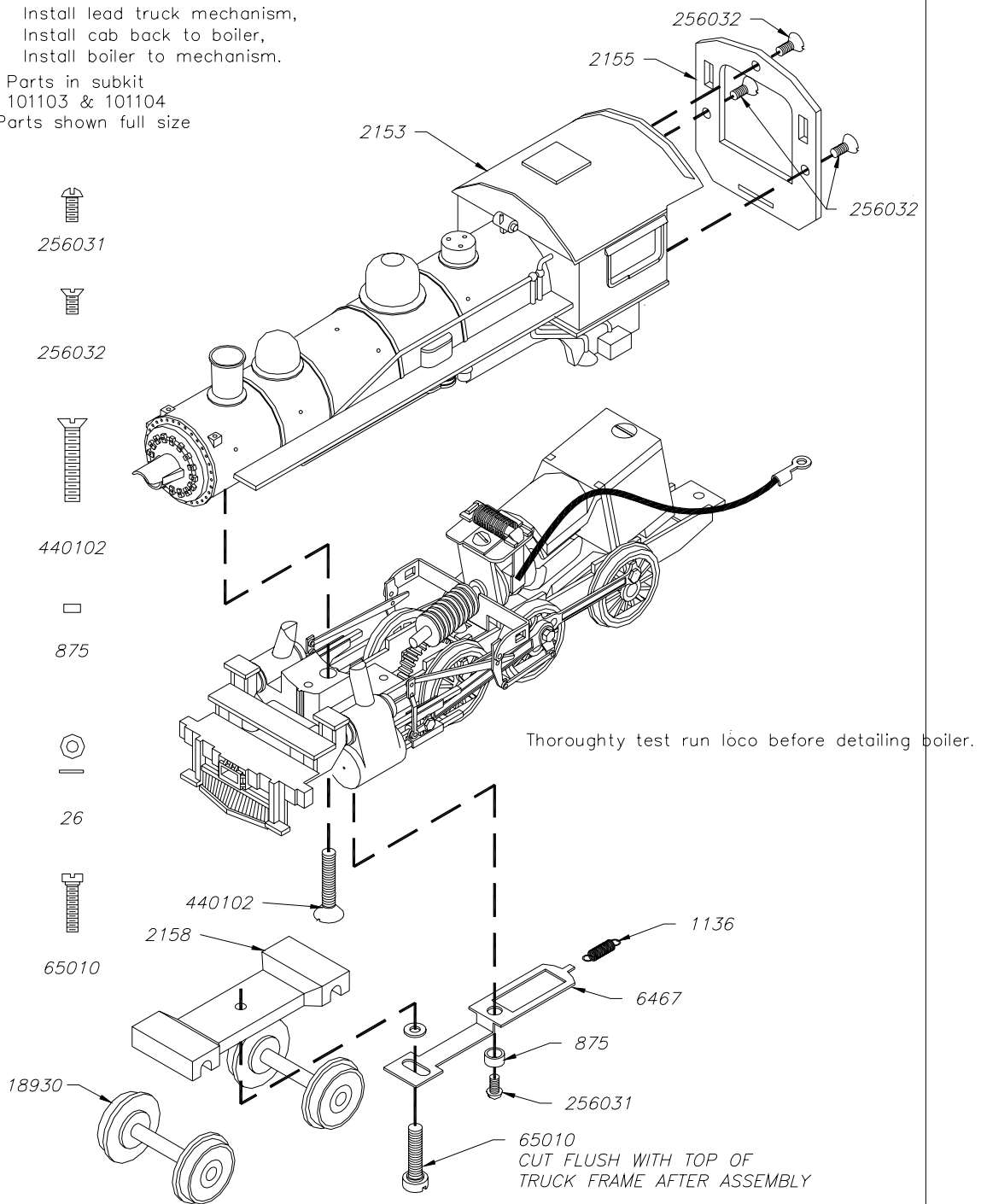
Parts in subkit
101103
Parts shown full size



STEP #7

Install lead truck mechanism,
Install cab back to boiler,
Install boiler to mechanism.

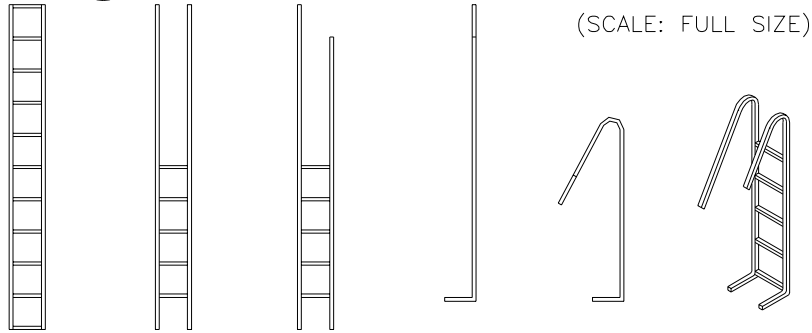
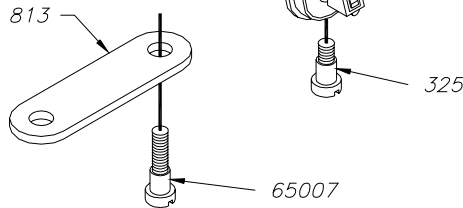
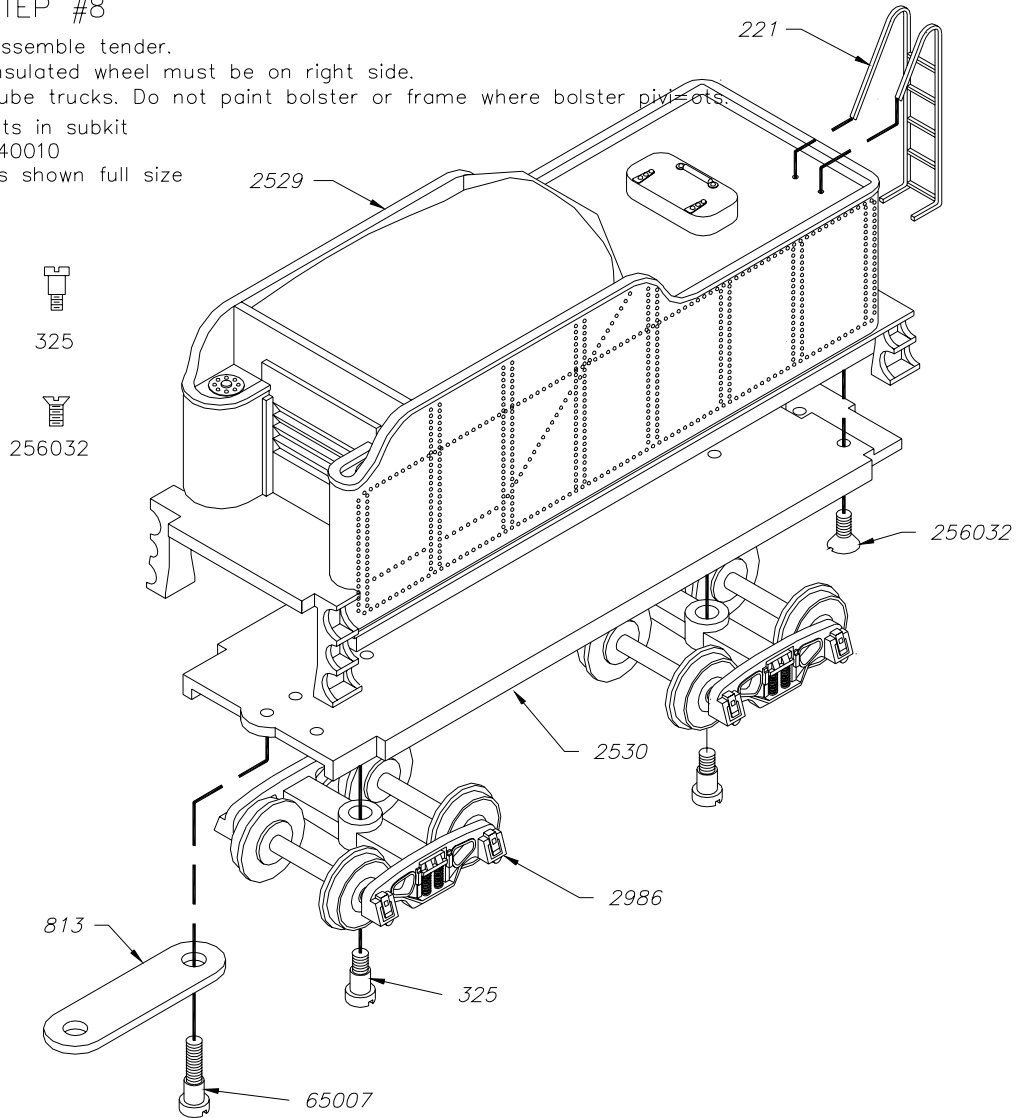
Parts in subkit
101103 & 101104
Parts shown full size



STEP #8

Assemble tender.
 Insulated wheel must be on right side.
 Lube trucks. Do not paint bolster or frame where bolster pivots.

Parts in subkit
 40010
 Parts shown full size



(SCALE: FULL SIZE)

FIGURE 1 FIGURE 2 FIGURE 3 FIGURE 4 FIGURE 5 FIGURE 6

STEP #9

Detail boiler.

Parts in subkit
100928
Parts shown full size

