

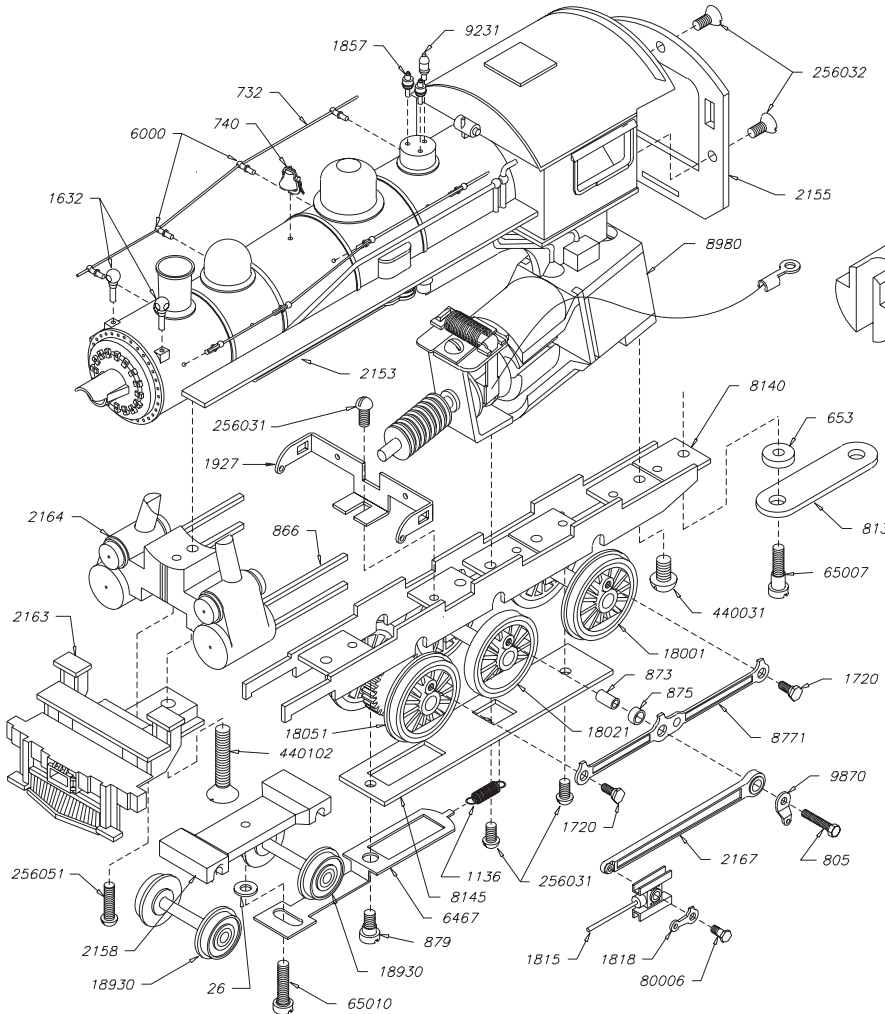
# CASEY JONES 4-6-0

This, like the "Old Lady", is a greatly modified version of Varney's "Casey Jones". It uses an all new mechanism which won't readily interchange with the old Varney mechanism. Only the pilot, cylinders, crossheads, main rod & lead truck castings are useable on old style locos. We do not have a Superdetail Kit for the "Casey Jones". It is similar to ten wheelers of many railroads, including the Erie, Ulster, and Delaware & Southern Pacific. Should you desire to add more detail, consult prototype photos and/or add details to your taste.

**PILOT COUPLERS-** Casey Jones uses Kadee® #4 mounted in pilot coupler pocket with 0-80 screw. Requires drilling & tapping a hole just behind coupler pocket and will not be self-centering.

If your old Varney drivers are defective, the complete set must be replaced. Bowser drivers will not work with the Varney drivers as they have a different offset on the crankpin holes. If you need a new gear, order matching #1030 worm. If your gear and worm are both good, send us the geared driver and we will quarter #18061 drivers with your gear. There is a standard service charge for quartering with customers gear. If your motor is defective, use Bowser DC-60. The DC-71 motor will not fit on the old Varney boiler.

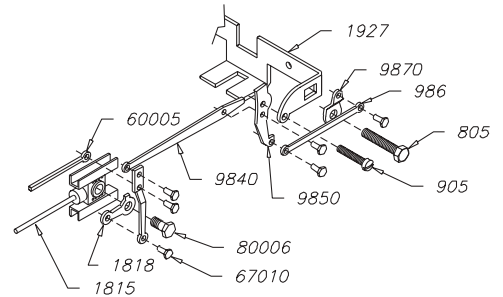
To install an operating head light - drill headlight cast on boiler 3/32" if necessary. Use a Grain of Wheat clear bulb and solder wires to motor brushes.



A customer called and told us the Casey Jones is very close to the IC #384.

MOTOR WORM GEAR	
WORM	1030
AXLE GEAR	1021
AXLE SPACING	1.102
GEAR RATIO	29-1

## VALVE GEAR ASSEMBLY KIT #101105 ASSEMBLED VALVE GEAR #501105



## BOWSER CASEY JONES - KITS AND ACCESSORIES

- #101100 Casey Jones w/ Tender, Kit
- #501105 Assembled Valve Gear
- #100932 Painted Engineer & Fireman



CASEY JONES 4-6-0, PHOTO OF BOWSER MODEL